

Guide To Wildlife Management Areas

John H. Kerr Reservoir



**US Army Corps
of Engineers** ®
Wilmington District

Welcome to John H. Kerr Dam and Reservoir

THE AREA

John. H. Kerr Reservoir is a federally owned multipurpose project managed by the U.S. Army Corps of Engineers. It is located on the Roanoke River Basin straddling the border of Virginia and North Carolina. Topography of the area is characteristic of the northern piedmont plateau, with gently rolling hills occasionally dissected by deep drainages. Land use includes large forest stands managed for timber interspersed with small farms. Land cover mostly consists of managed forests.

Forest cover types include:

Upland Hardwood	- Oak and Hickory
Mixed	- Upland Hardwood and Pine
Pine	- Loblolly, Short-Leaf, and Virginia
Bottomland Hardwood	- Willow, Willow Oak, Ash, Birch, Sycamore, and Sweetgum

The John H. Kerr Dam and Reservoir Project is a 50,000 acre reservoir with an additional 55,000 acres of surrounding land . Approximately 40,000 acres of the surrounding land is open to hunting and 15,000 acres designated for recreational use where no hunting is allowed.

This Wildlife Management Area Guide details 26 areas open to hunting, wildlife viewing, hiking and cycling. These areas contain a variety of cover types including large and diverse forests, open fields of varying sizes, and beaver swamps. The maps of the Wildlife Management Areas (WMA) are arranged alphabetically with a center-fold map of the entire reservoir as an index.



ACCESS

Access to public land is provided at each Wildlife Management Area. Parking areas are provided with either walking trails or light duty roads leading to the interior of the areas. Roads may be closed to vehicles in order to protect habitat and to provide a more natural experience for visitors.

Most all public lands are accessible by water, while some public land may only be accessible by crossing private property. Such lands are generally open to hunting and other public uses; however, permission must first be obtained from the landowner to cross private property.

WATCHABLE WILDLIFE

The lands and waters of John H. Kerr Reservoir affords the visitor with an excellent opportunity to observe wildlife within its natural habitat. Each Wildlife Management Area is open year-round for hiking, birding, photography, and wildlife observation. John H. Kerr is an attraction for Bald Eagles, Osprey, numerous species of seagulls, Great Blue Herons, and waterfowl. Careful observers may occasionally spy a variety of different species enjoying themselves around the lake. A checklist of the birds found at John H. Kerr is available at the Visitor Assistance Center.

WILDLIFE MANAGEMENT

One of the primary objectives in the management of John H. Kerr Reservoir is the protection and management of wildlife habitat. Many disciplines are involved including land management, forestry, fisheries, and wildlife biology. Some of the techniques involved include establishment of permanent forest openings, planting of wildlife food plots, restoration of native grasses, periodic mowing, prescribed burning, various timber harvesting techniques, placement of artificial fishing reefs, and erection of nesting structures.



TRAILS

Each Wildlife Management Area at Kerr is open year-round for those individuals looking for outdoor opportunities. All roads in the Wildlife Management Areas can be used as trails for hiking, wildlife viewing, birding, cycling, and horseback riding. Motorized vehicles are not allowed behind closed gates or barricades. ATV's are prohibited.

Individuals looking for marked trails can also find three trails located at John H. Kerr Reservoir:

Liberty Hill Trail (Hiking Only) - The trail is located on the south side of Kerr Dam and ample parking is available. The 1.6 mile marked trail is a self-guided interpretive trail. Liberty Hill Trail meanders through mixed hardwoods, an old cemetery, and descends to the river overlooking Buggs Island and gives a view of the river side of Kerr Dam.

Robert Munford Trial (Multipurpose Trail)– The trail is approximately a seven mile linear trail. Trailheads are located at Taylor's Ferry Road at Eagle Point Recreation Area and at the entrance to Greenwood WMA. The trail is marked with white paint and meanders along reservoir shoreline through lowland hardwoods and upland mixed stands. The trail is named for an important resident of early Mecklenburg County and even passes by his gravesite. Evidence of pre-dam era life can be found, which includes a cemetery, foundations, ice storage structures, rock and rubble walls.

Virginia Birding and Wildlife Trail (Vehicle Trail)- The Piedmont section of Virginia has 13 trail loops used to help the public find unique spots for wildlife viewing. Each loop consists of many stops that displays the Virginia Birding and Wildlife Trail logo. Many of these stops are located around John H. Kerr Reservoir. The Christanna Loop has a stop at the Tailrace Park near the Powerhouse. The Dan River Loop has stops at Staunton River State Park, Merifield WMA, Old Soudan WMA, and Occoneechee State Park. A guide to the Virginia Birding and Wildlife Trail can be obtained by contacting the Virginia Department of Game and Inland Fisheries.

HUNTING

Game Species

Some game species found at John H. Kerr include: White-Tailed Deer, Wild Turkey, Northern Bobwhite Quail, Morning Dove, Northern Gray Squirrel, Eastern Cottontail Rabbit, Bobcat, Gray and Red Fox, and Raccoon. Resident waterfowl species include Wood Duck, Black Duck, Mallard, and Canada Goose.

The White-Tailed Deer numbers at John H. Kerr have risen steadily over recent years. Local custom in Virginia and North Carolina is to hunt deer with the use of hounds on organized hunts during general firearm season. However, solitary “still hunters” also take numerous deer.

Weedy field borders and forest openings provide habitat for Northern Bobwhite Quail. Although the population level of this bird is only a shadow of the numbers which formally occurred in the Piedmont, the vigilant hunter may still find a gunning opportunity.

The Wild Turkey population, as in many other areas, has increased over recent years. Spring gobbler hunting is popular in the area by those willing to apply their skill in stealth and perseverance. A fall turkey season is also available to hunters.

There is also opportunity for some waterfowl hunting at John H. Kerr Reservoir as ducks and geese migrate through the area in limited numbers. Wood Ducks, Black Ducks and Mallards reproduce in the many beaver ponds found throughout the area.



REGULATIONS

Hunting is allowed throughout the area, except in designated recreation areas, restricted areas, near buildings, and administrative areas. Rules and Regulations governing the use of all lands and waters on John H. Kerr Reservoir are contained in Title 36 Code of Federal Regulations. Copies are posted in recreation areas and are also available at the US Army Corps of Engineers Visitor Assistance Center. These regulations are enforced by John H. Kerr Reservoir resource management staff. Regulations pertinent to the use of Wildlife Management Areas are as follows:

- Vehicle must stay on designated roadways. Taking any vehicle through, around or beyond a restrictive sign, recognizable barricade, fence, or traffic control barrier is prohibited.
- Open fires are not permitted.
- Camping is allowed in designated campgrounds only.
- No littering.
- Trees, shrubs, cultural resources, and other natural features or constructed facilities such as signs, gates, toilets, etc., must not be disturbed, removed, or altered.
- ATV's are prohibited on all public property.
- Tree stands may be used, but cannot be left overnight and cannot be nailed, screwed, or tacked into trees.
- Personal property abandoned over twenty-four hours may be impounded.
- No permanent structures (including deer blinds and duck blinds) may be placed on public property.

Regulations concerning licenses, seasons and bag limits are controlled by the states and enforced by North Carolina and Virginia State Game Officers. A hunting license issued by the appropriate state is required to hunt on project lands in Virginia, and North Carolina. Wildlife Management Areas located in North Carolina also require a Game Lands Permit, which is available through the North Carolina Wildlife Resources Commission.

Please report any violations of fish and game laws to the following offices:

Virginia 1 (800) 237-5712
North Carolina 1 (800) 662-7137

Please consult North Carolina Wildlife Resources Commission and the Virginia Department of Game and Inland Fisheries for specific dates and hunting requirements.

PARTNERS

Currently several partners assist in the management of numerous Wildlife Management Areas at John H. Kerr Reservoir. These partners include: National Wild Turkey Federation, Quail Unlimited, Ducks Unlimited, US Fish and Wildlife Service, Virginia Department of Conservation and Recreation, Virginia Department of Game and Inland Fisheries, North Carolina Wildlife Resources Commission, and private individuals. If any individuals or groups would like to help in a cooperative effort to manage any Wildlife Management Area, please contact the US Army Corps of Engineers at John H. Kerr Reservoir.

**BANISTER RIVER - NORTH UNIT
WILDLIFE MANAGEMENT AREA**
555 acres

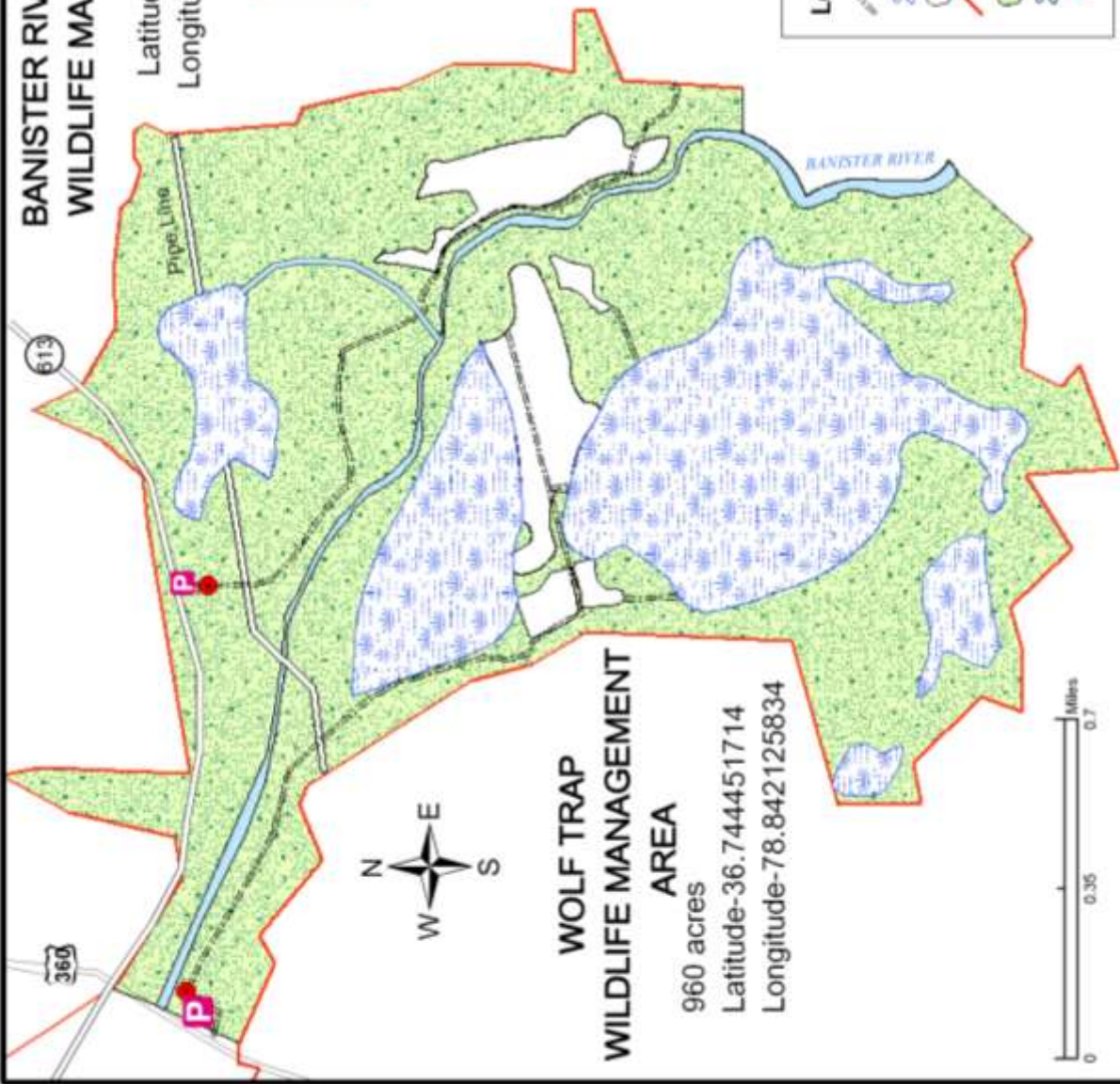
Latitude-36.744993135
Longitude-78.826235390



**US Army Corps
of Engineers**
Wilmington District

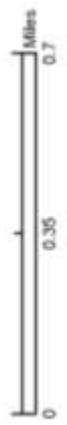
Legend

- WMA Road
- Swamp
- Field
- Government Boundary
- Forest
- Banister River
- WMA Gates



**WOLF TRAP
WILDLIFE MANAGEMENT
AREA**
960 acres

Latitude-36.744451714
Longitude-78.842125834

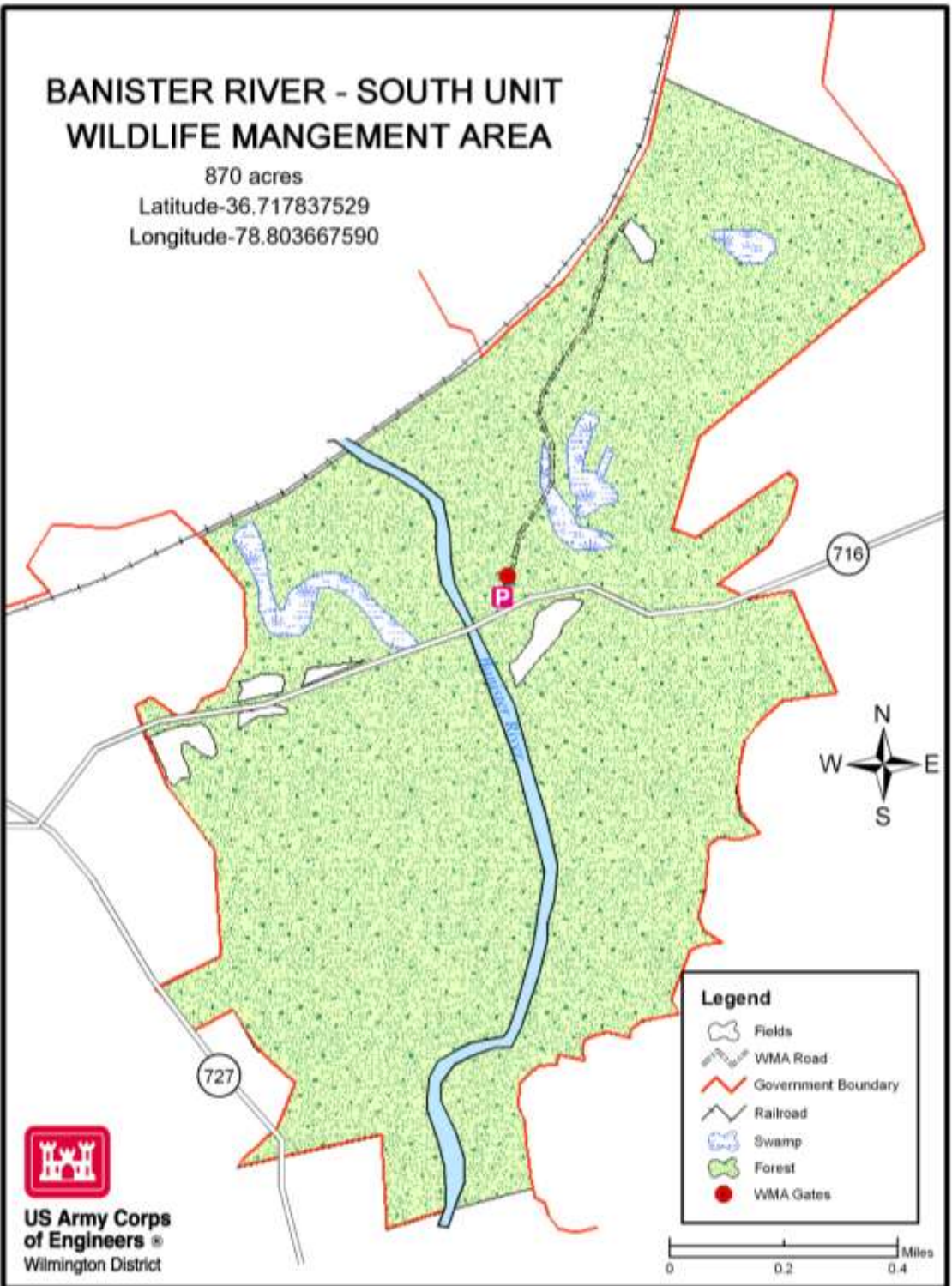


BANISTER RIVER - SOUTH UNIT WILDLIFE MANGEMENT AREA

870 acres

Latitude-36.717837529

Longitude-78.803667590



**US Army Corps
of Engineers** ®
Wilmington District

BEAVER POND CREEK WILDLIFE MANAGEMENT AREA

720 acres

Latitude-36.595632460

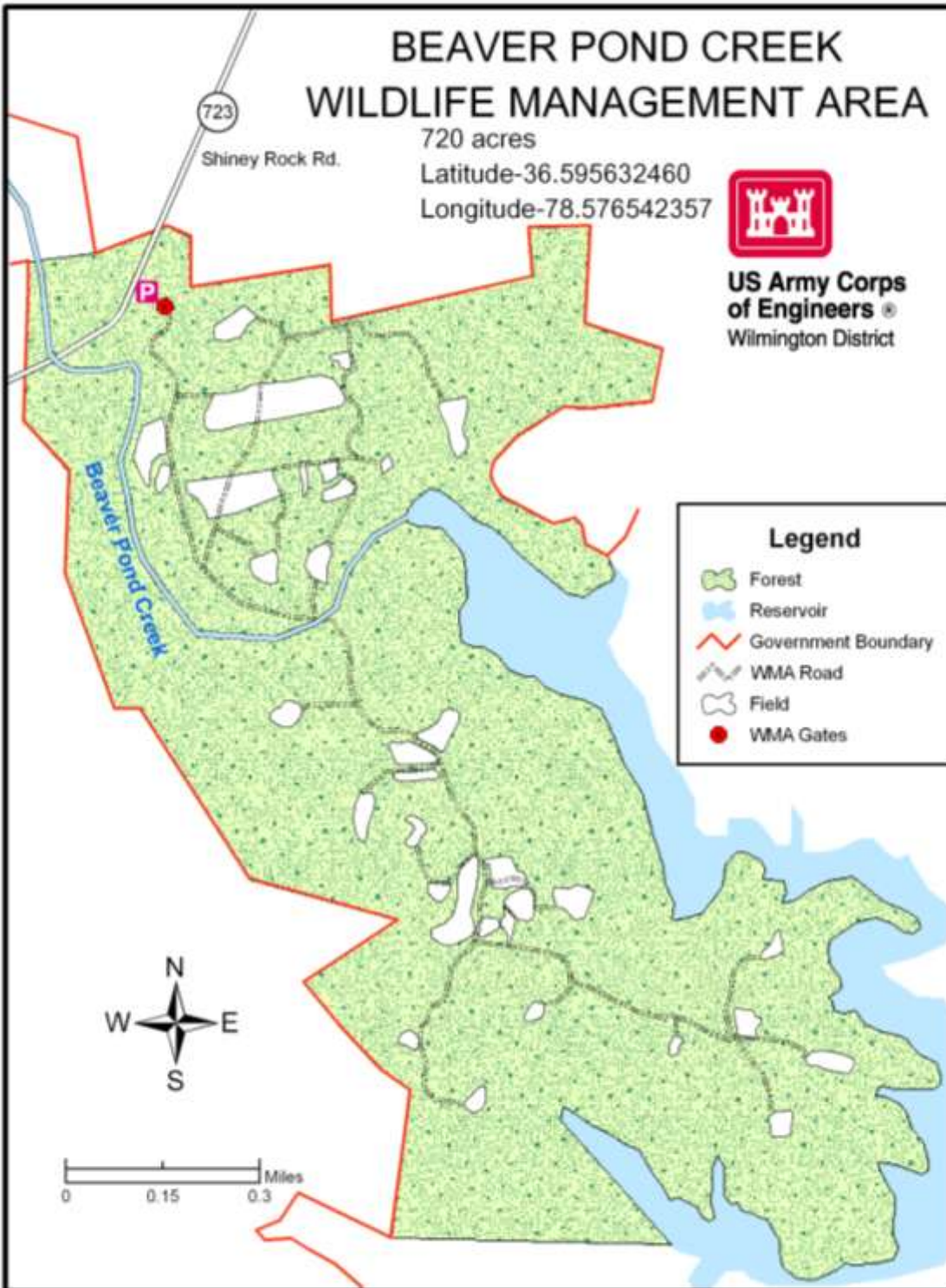
Longitude-78.576542357

723

Shiney Rock Rd.



**US Army Corps
of Engineers**
Wilmington District



BLUESTONE WILDLIFE MANAGEMENT AREA

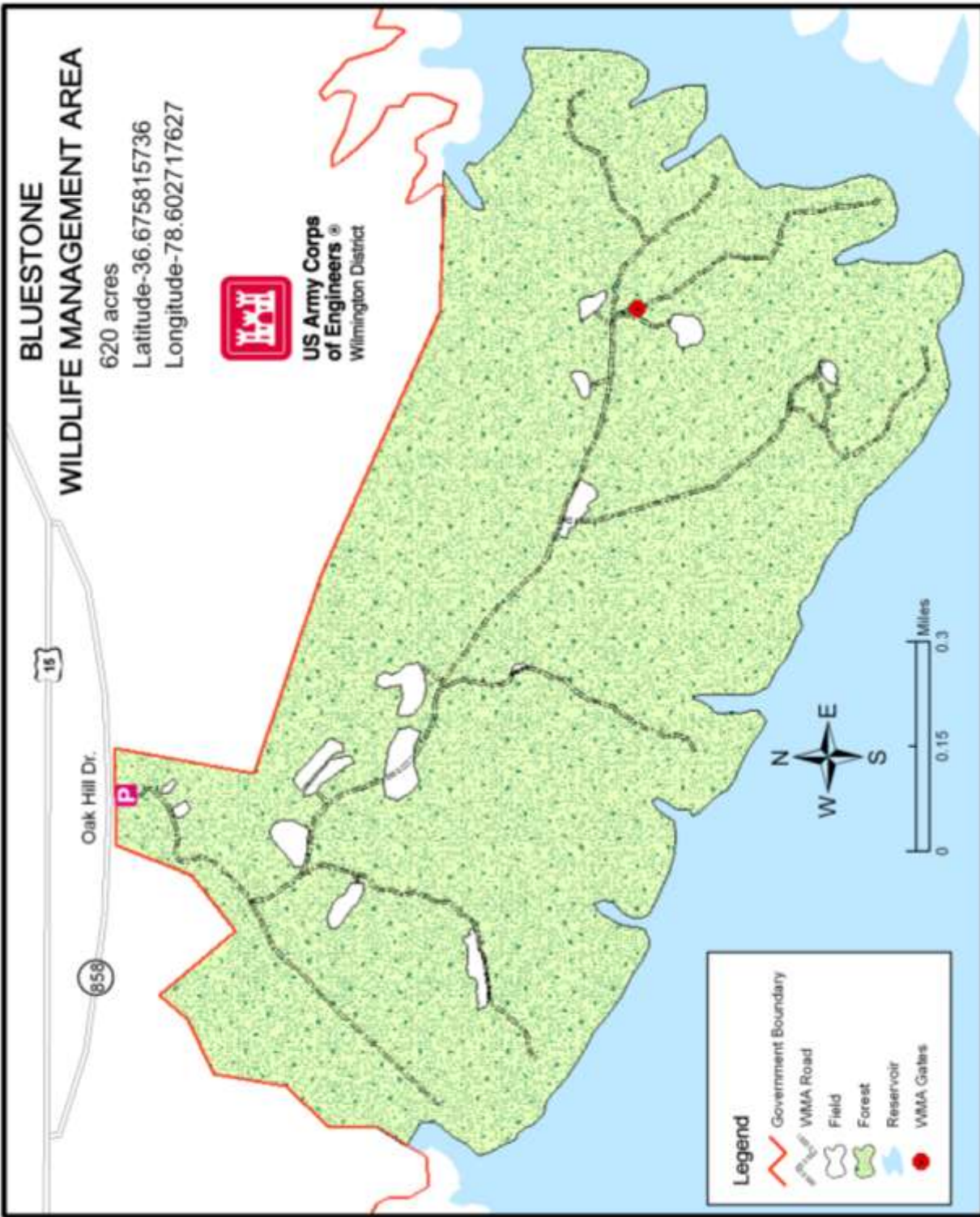
620 acres

Latitude-36.675815736

Longitude-78.602717627



**US Army Corps
of Engineers**
Wilmington District



Legend

- Government Boundary
- VMA Road
- Field
- Forest
- Reservoir
- VMA Gators

BUFFALO WILDLIFE MANAGEMENT AREA

610 acres

Latitude-36.670565164

Longitude-78.649301833



**US Army Corps
of Engineers**®
Wilmington District

Legend

- WMA Road
- Field
- Government Boundary
- Forest
- Reservoir
- WMA Gates



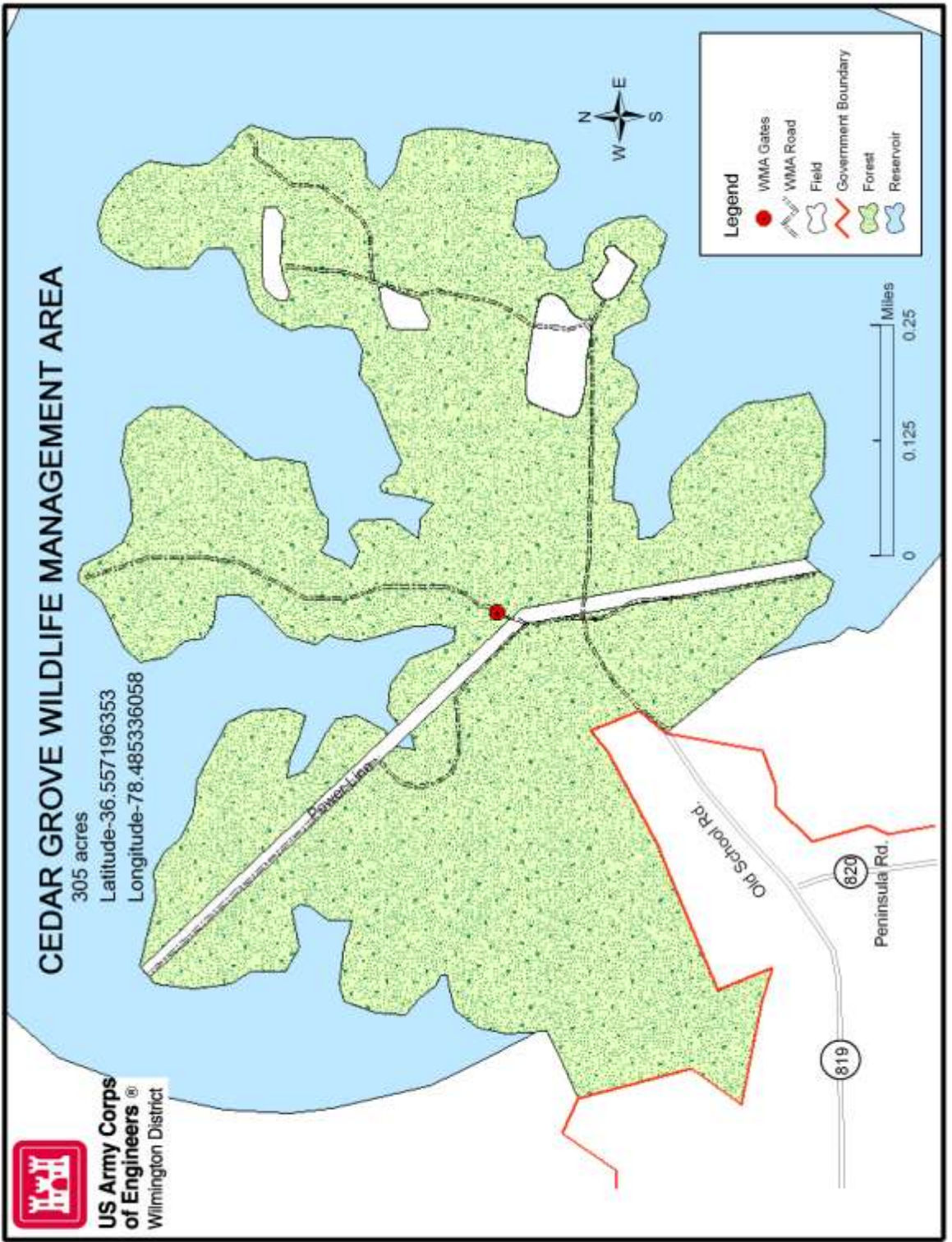
Buffalo Springs Rd. 767

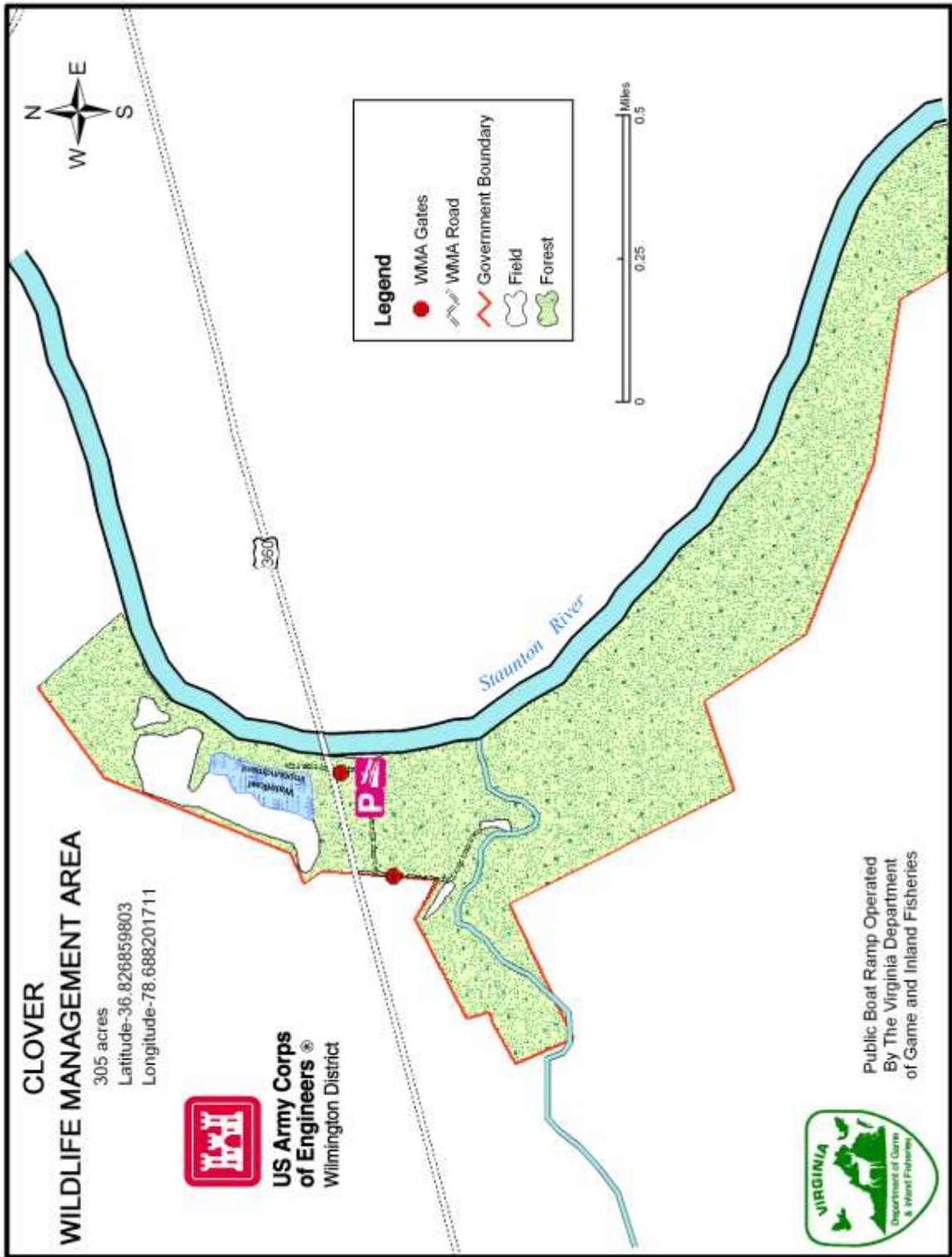
To 58

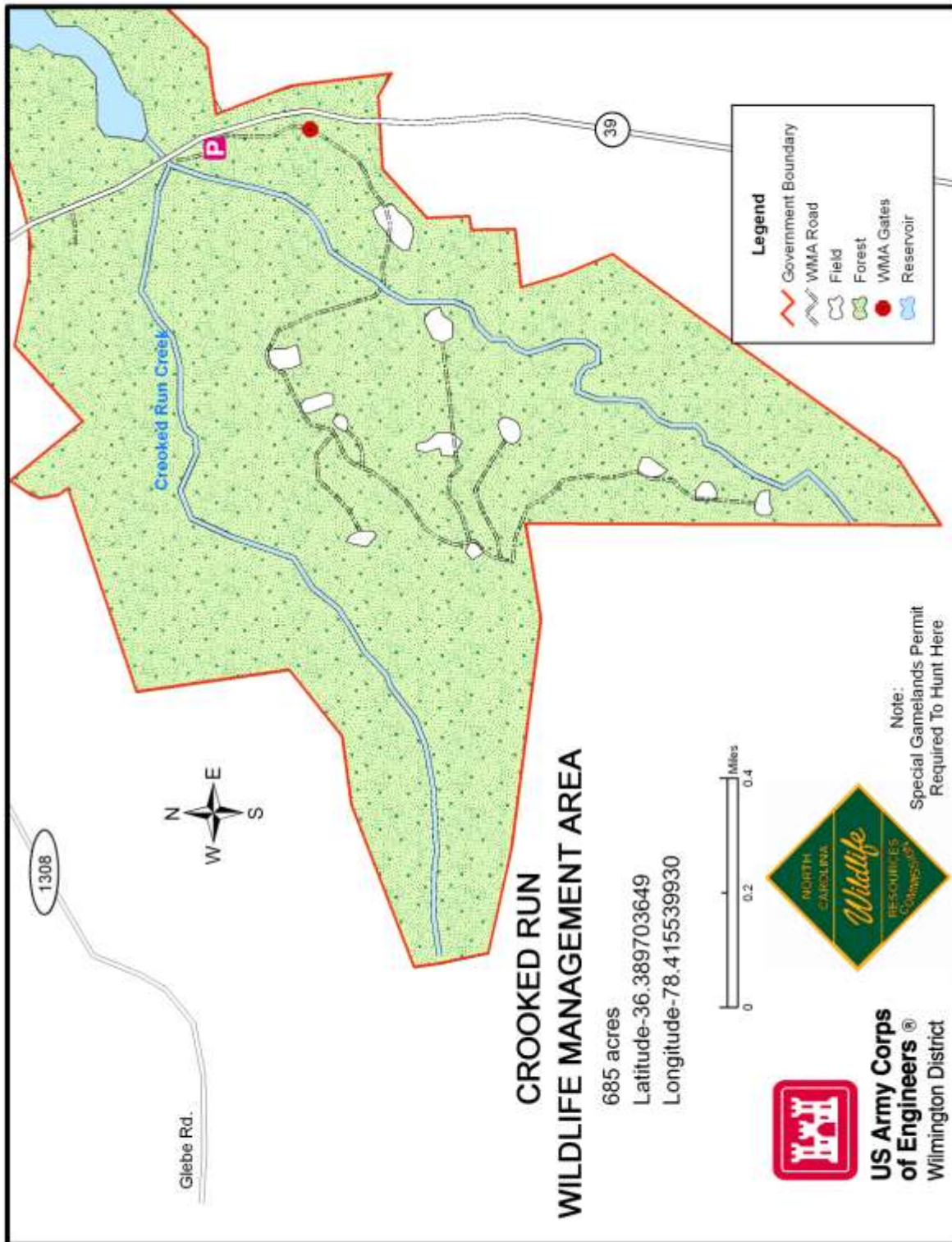


722

Carters Point Rd.







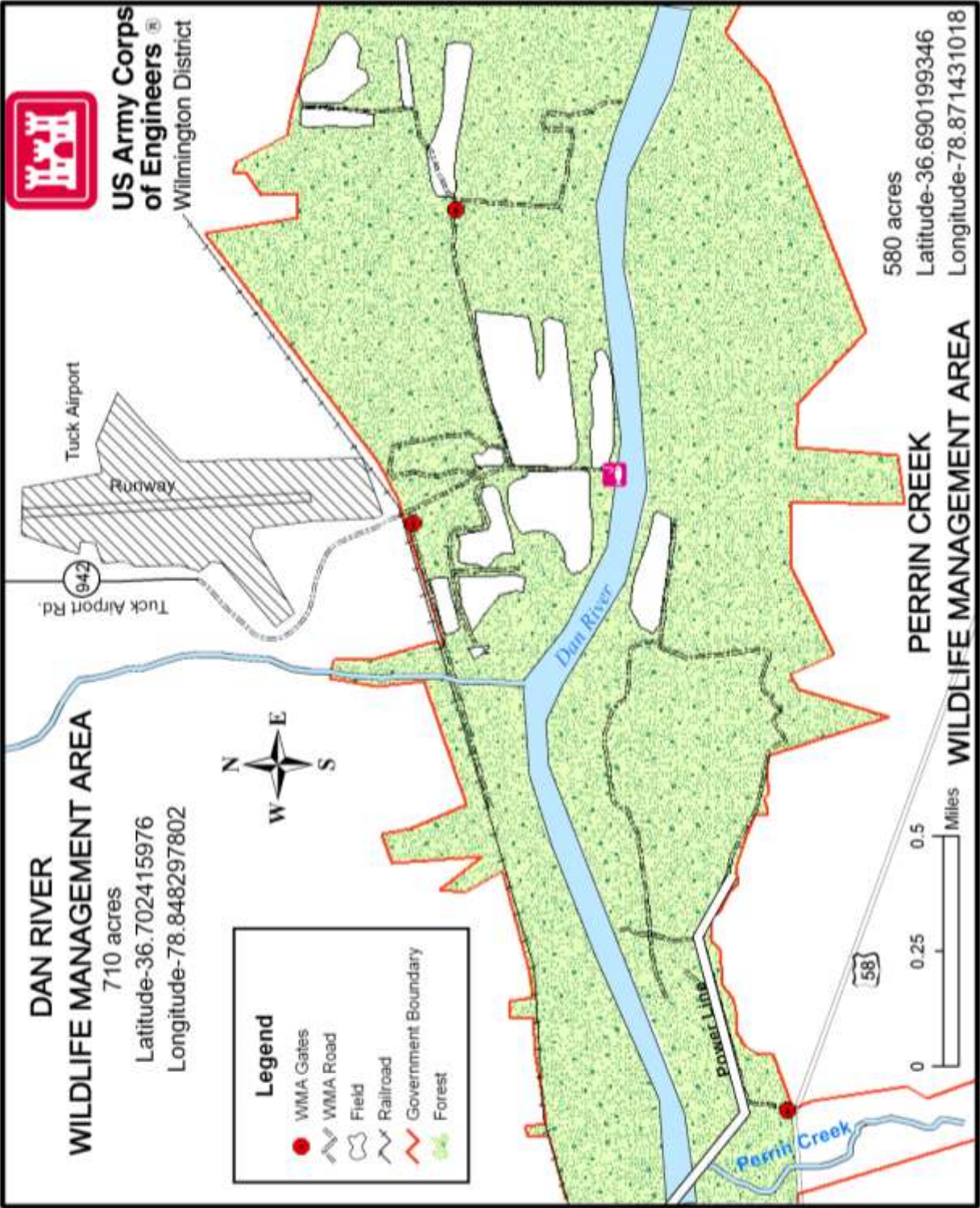
**CROOKED RUN
WILDLIFE MANAGEMENT AREA**

685 acres
 Latitude-36.389703649
 Longitude-78.415539930



**US Army Corps
of Engineers**
 Wilmington District

Note:
 Special Gamelands Permit
 Required To Hunt Here



EAGLE POINT

WILDLIFE MANAGEMENT AREA

435 acres

Latitude-36.609304198

Longitude-78.396397936

705

Taylor
Ferry Rd.



**US Army Corps
of Engineers**
Wilmington District

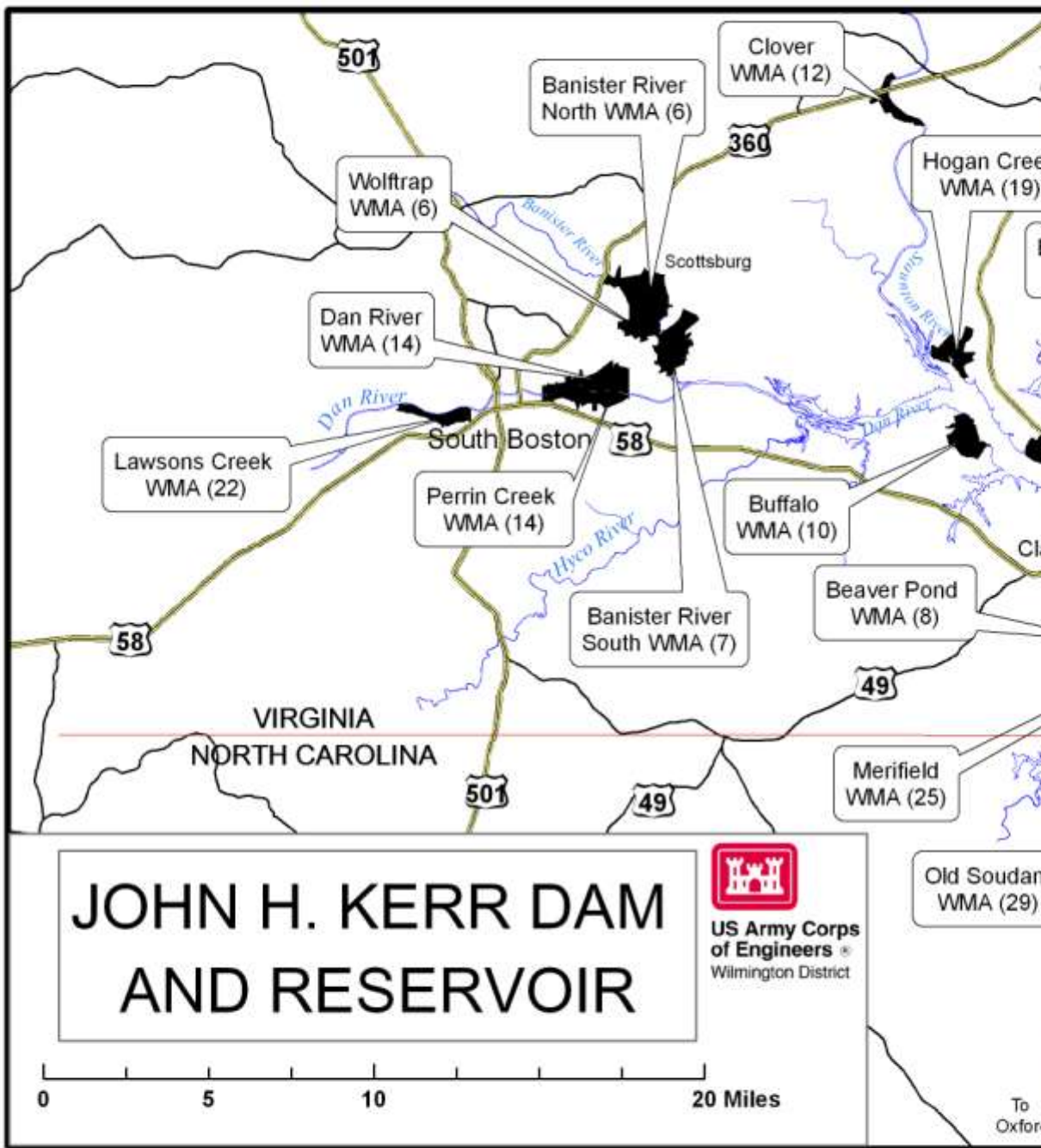
Power Line

To
Boat Ramp

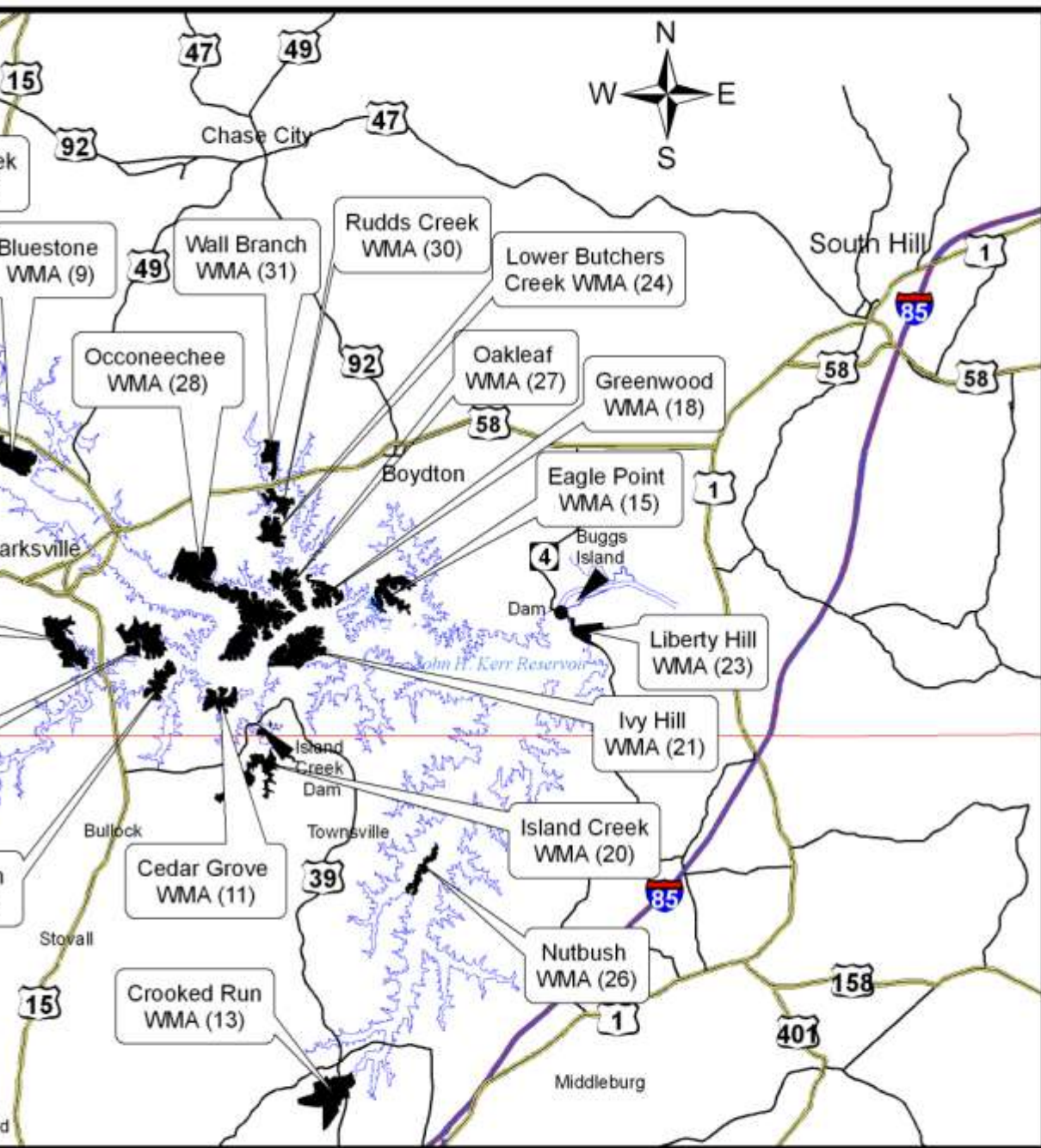
Legend

- Field
- WMA Road
- Government Boundary
- Forest
- Reservoir
- WMA Gallies

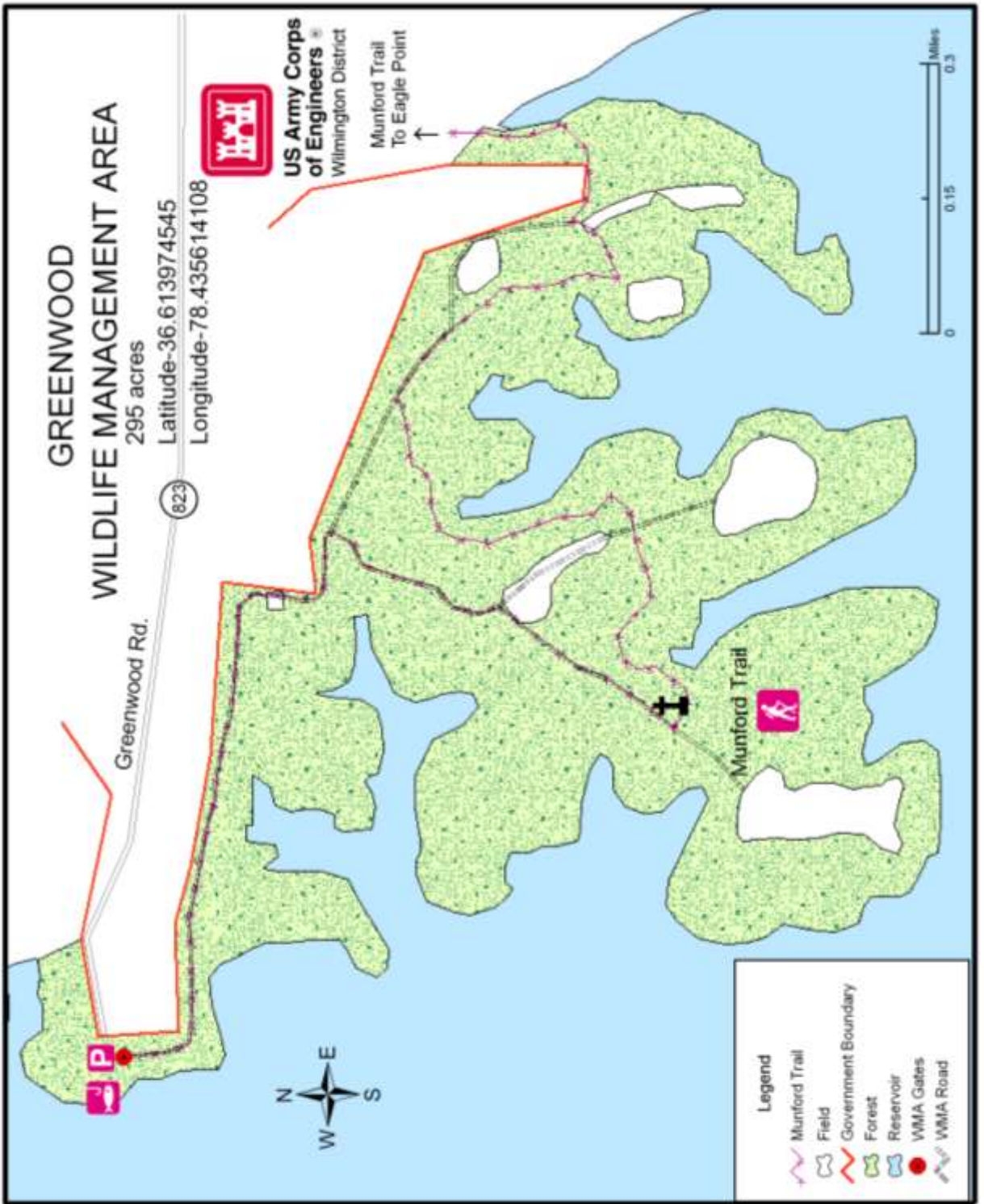




(#) references page



ge number in book

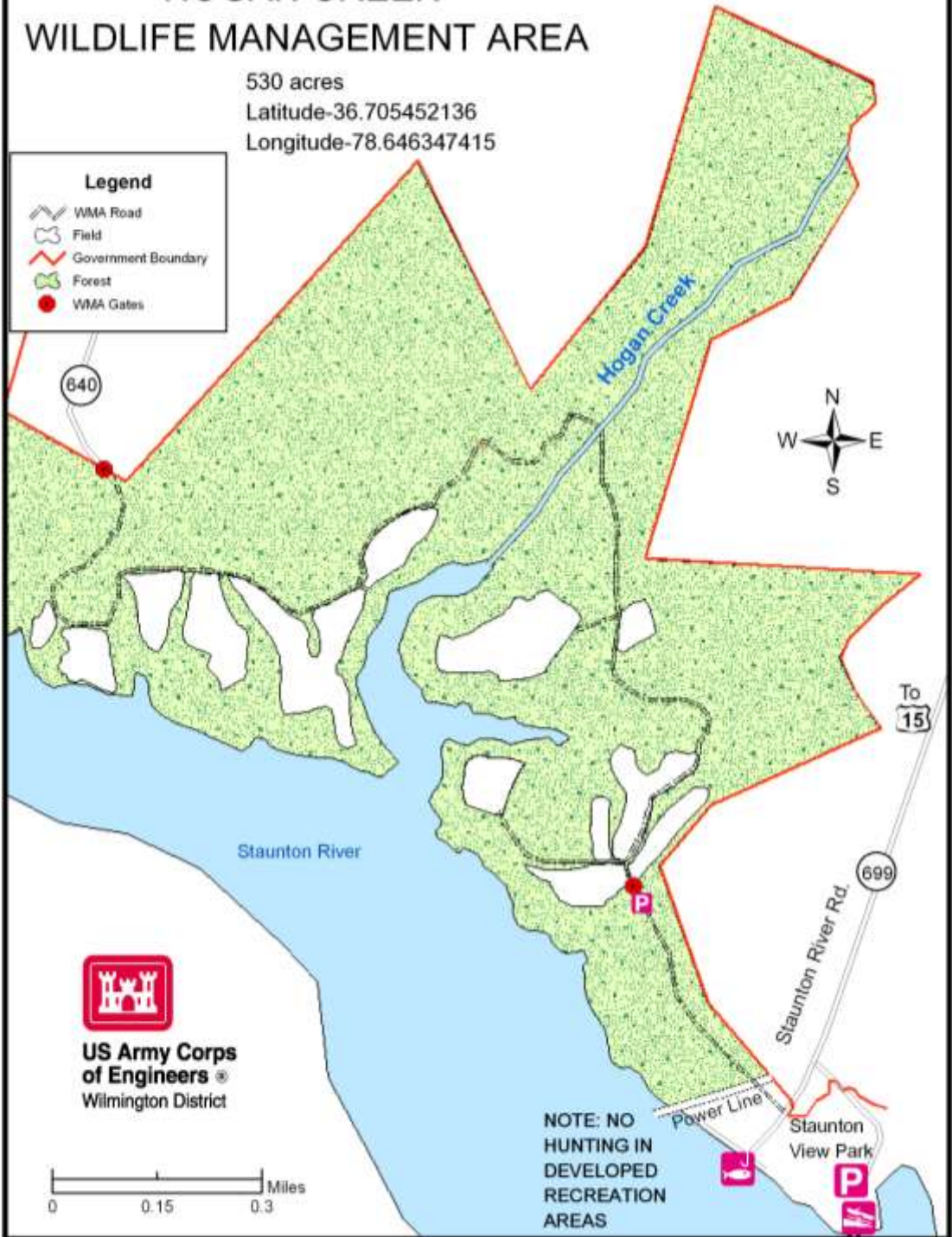


HOGAN CREEK WILDLIFE MANAGEMENT AREA

530 acres
Latitude-36.705452136
Longitude-78.646347415

Legend

- WMA Road
- Field
- Government Boundary
- Forest
- WMA Gates



IVY HILL WILDLIFE MANAGEMENT AREA

775 acres

Latitude-36.575121134

Longitude-78.445989430

Legend

- Government Boundary
- Field
- Forest
- WMA Road
- Reservoir



**US Army Corps
of Engineers**
Wilmington District



To Ivy Hill
Recreation Area

Island Hill Rd.





US Army Corps
of Engineers
Wilmington District

LAWSONS CREEK WILDLIFE MANAGEMENT AREA

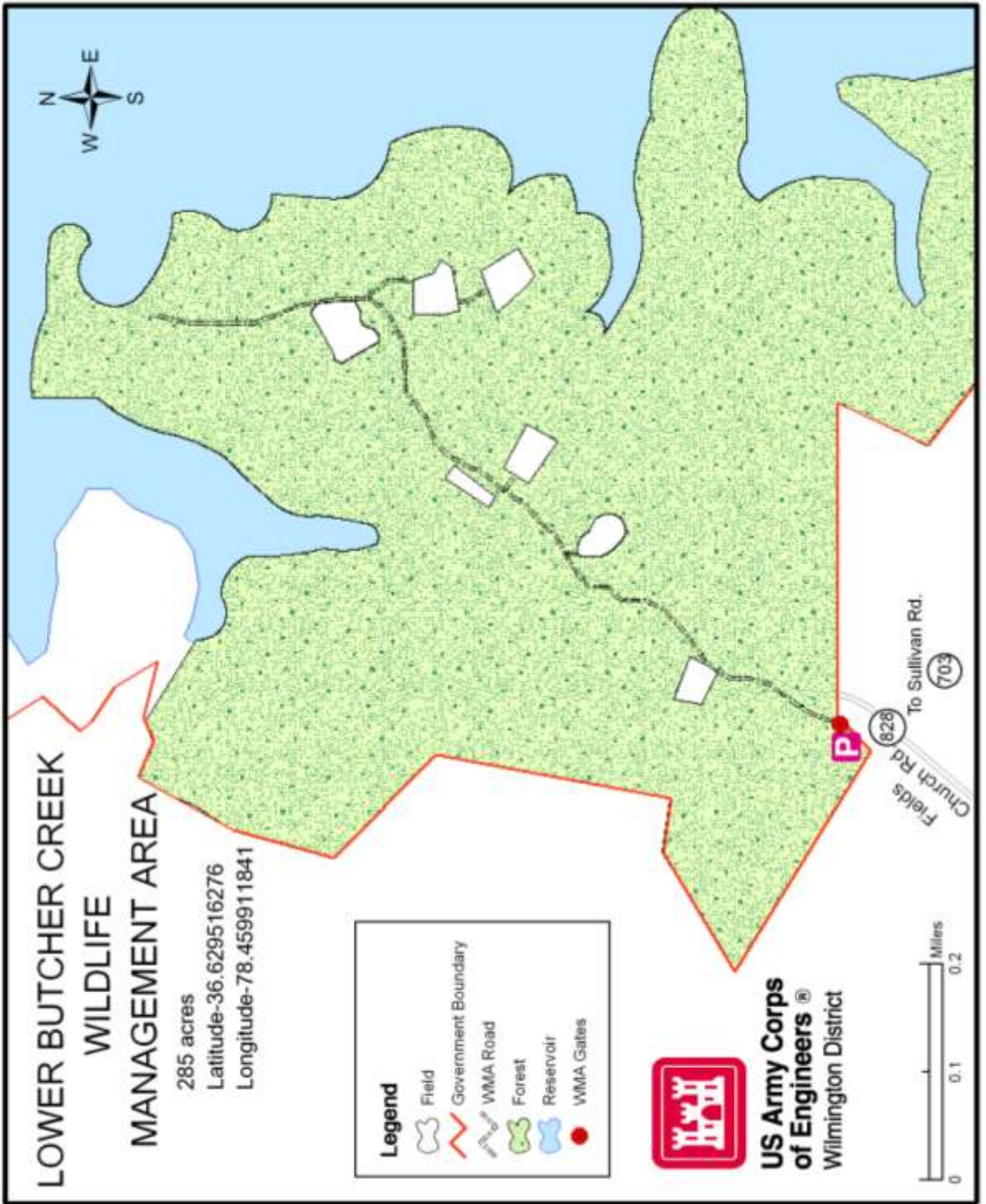
375 acres

Latitude-36.679444873

Longitude-78.928373746







**LOWER BUTCHER CREEK
WILDLIFE
MANAGEMENT AREA**

285 acres
 Latitude-36.629516276
 Longitude-78.459911841

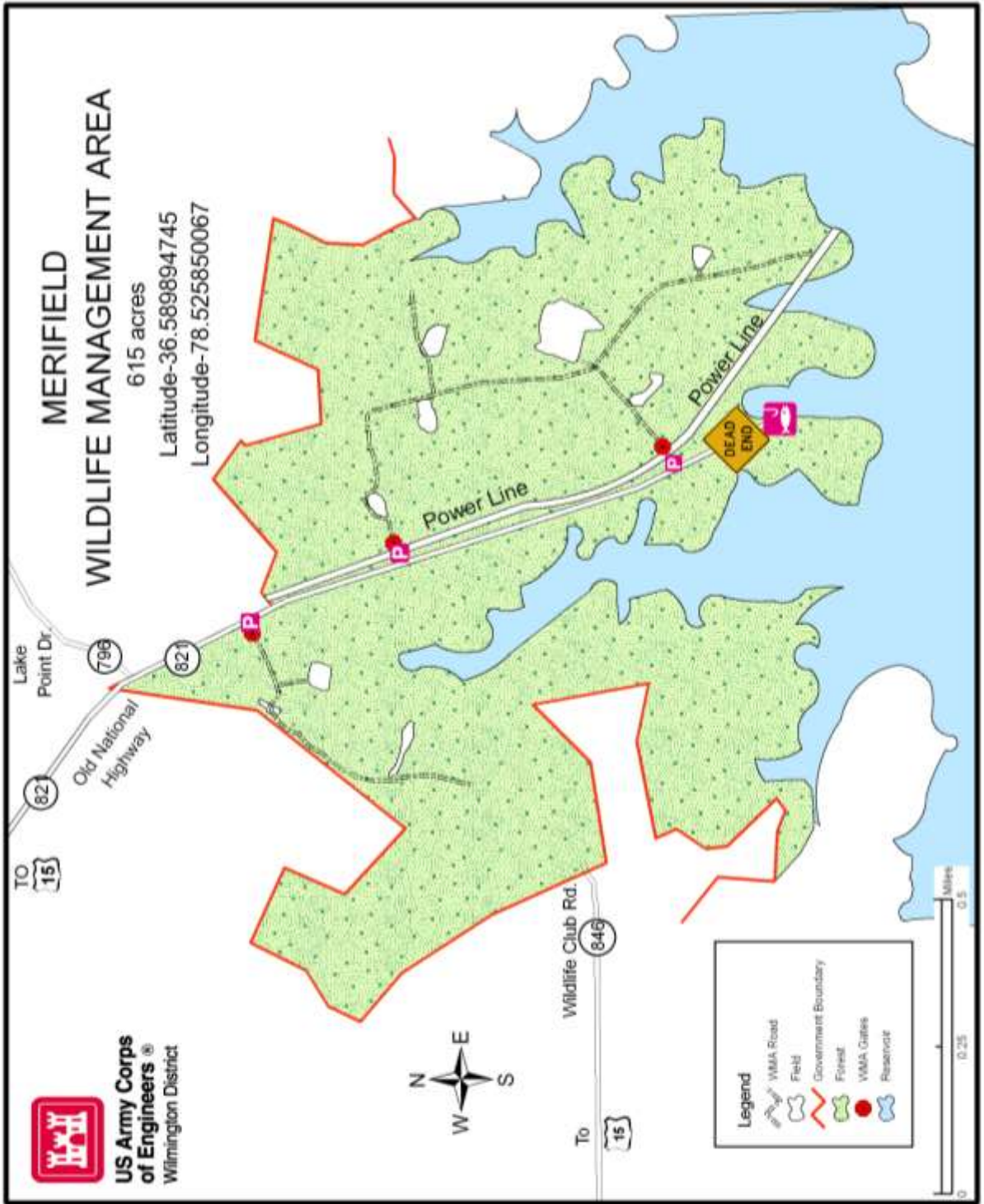
Legend

- Field
- Government Boundary
- WMA Road
- Forest
- Reservoir
- WMA Gallies



**US Army Corps
of Engineers**
 Wilmington District





NUTBUSH WILDLIFE MANAGEMENT AREA

195 ACRES
Latitude-36.477387056
Longitude-78.378109846



**US Army Corps
of Engineers** ®
Wilmington District



Note:
Special Gamelands Permit
Required To Hunt Here



Legend

- Government Boundary
- WMA Road
- Field
- Forest
- Reservoir
- WMA Gates

0 0.25 0.5 Miles

To
1329

OAKLEAF WILDLIFE MANAGEMENT AREA

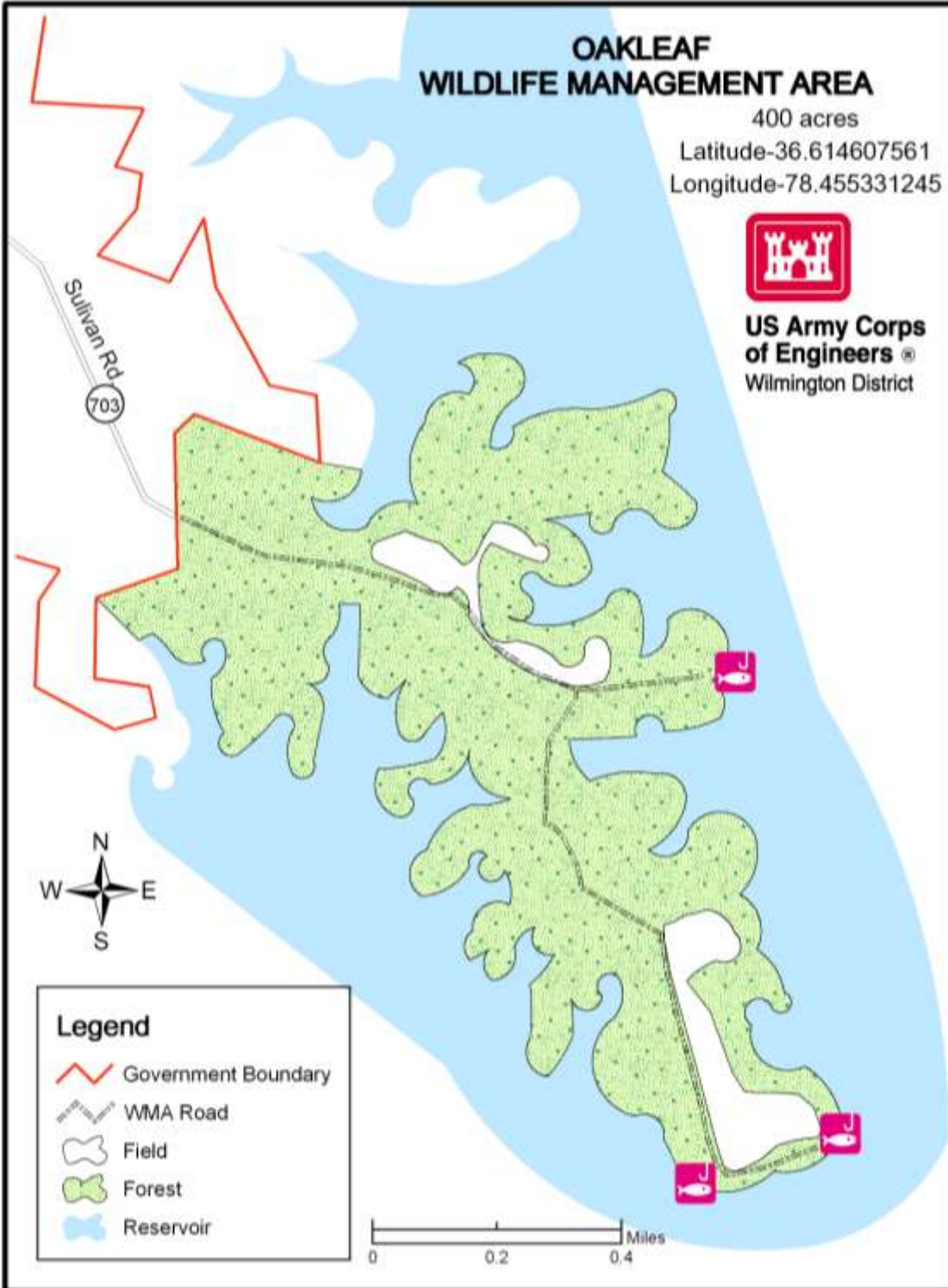
400 acres

Latitude-36.614607561

Longitude-78.455331245

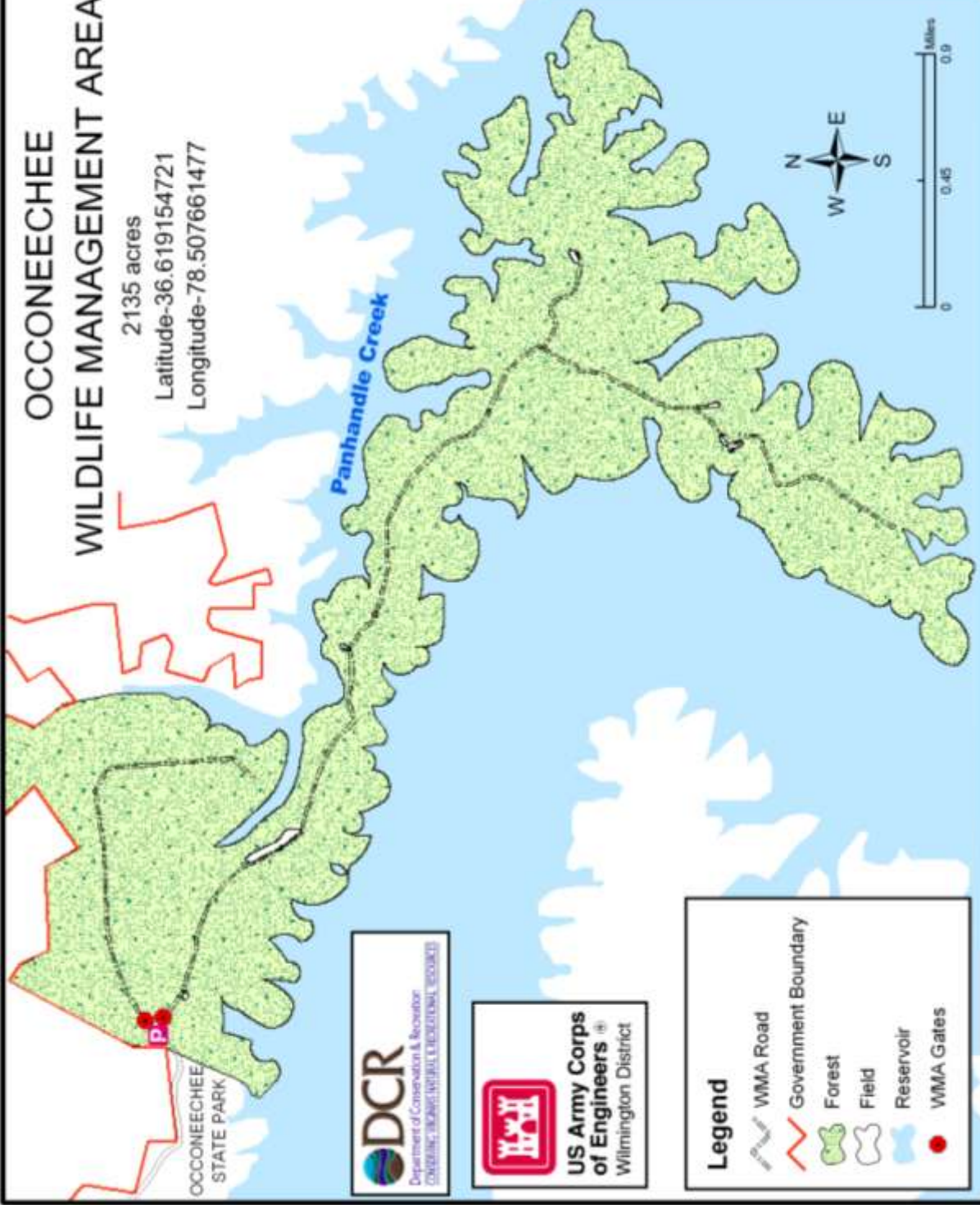


**US Army Corps
of Engineers**®
Wilmington District



OCCONEECHEE WILDLIFE MANAGEMENT AREA

2135 acres
Latitude-36.619154721
Longitude-78.507661477



OCCONEECHEE
STATE PARK



Legend

- WMA Road
- Government Boundary
- Forest
- Field
- Reservoir
- WMA Gates

OLD SOUDAN WILDLIFE MANAGEMENT AREA

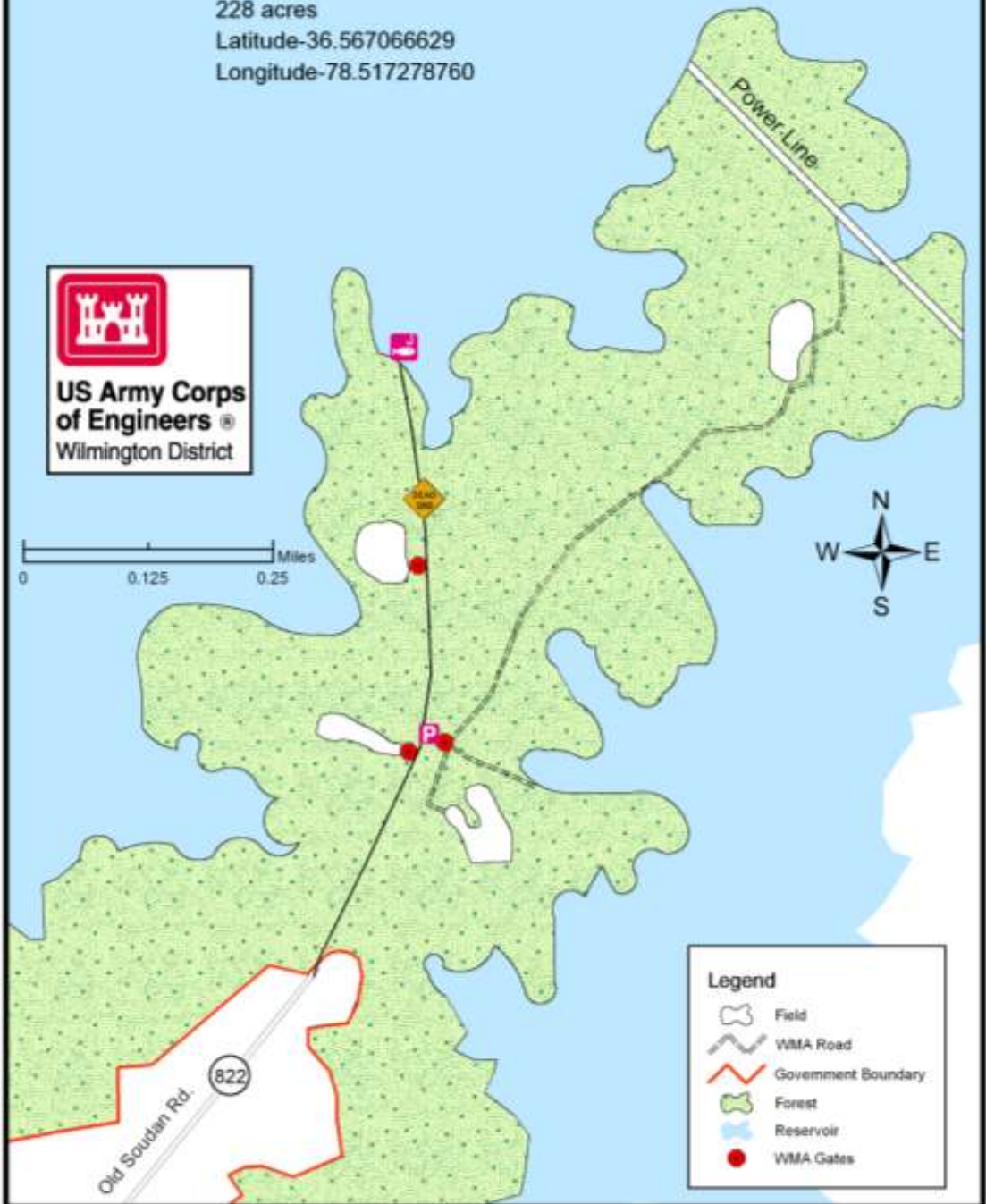
228 acres

Latitude-36.567066629

Longitude-78.517278760

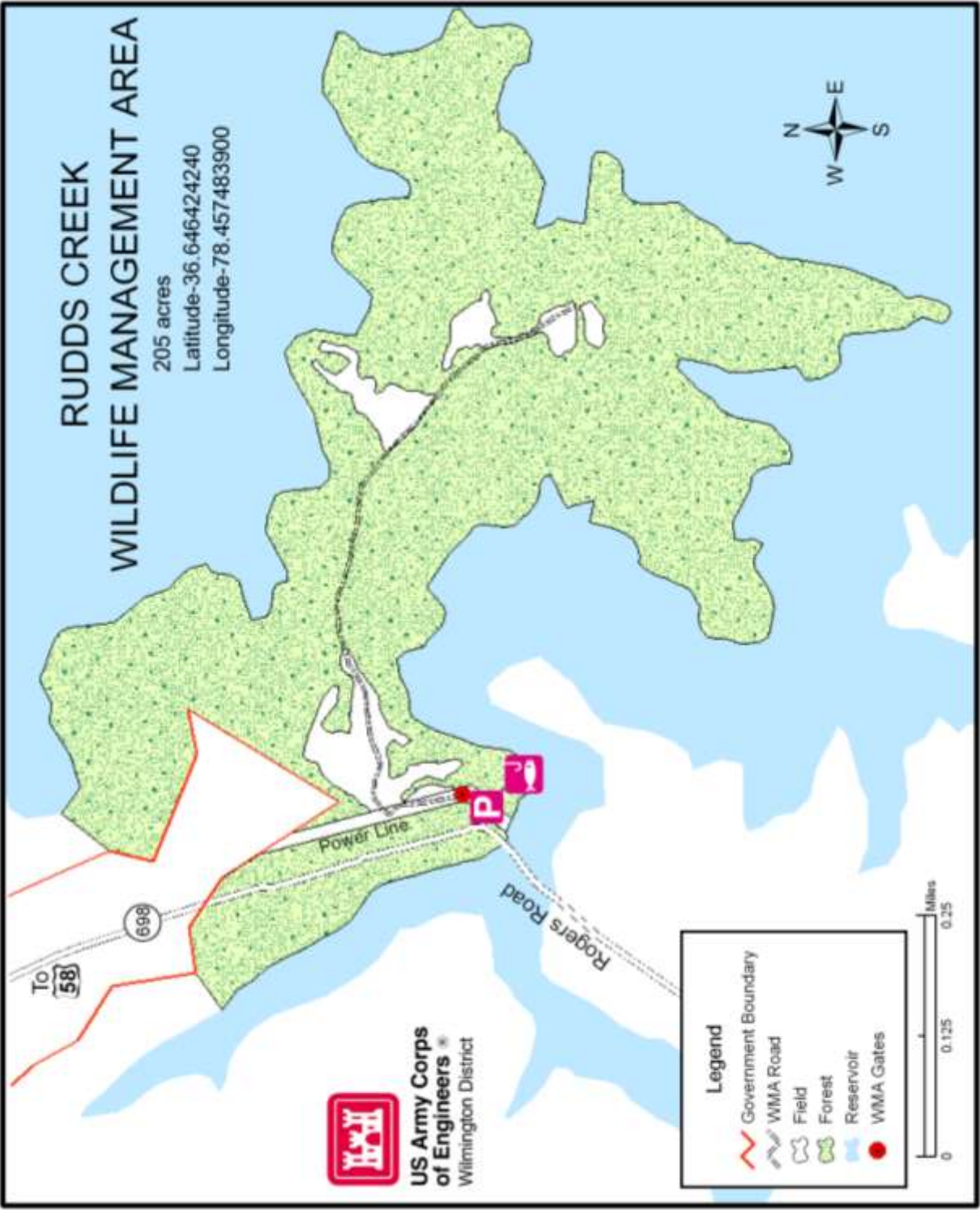


**US Army Corps
of Engineers** ®
Wilmington District



RUDDS CREEK WILDLIFE MANAGEMENT AREA

205 acres
Latitude-36.646424240
Longitude-78.457483900

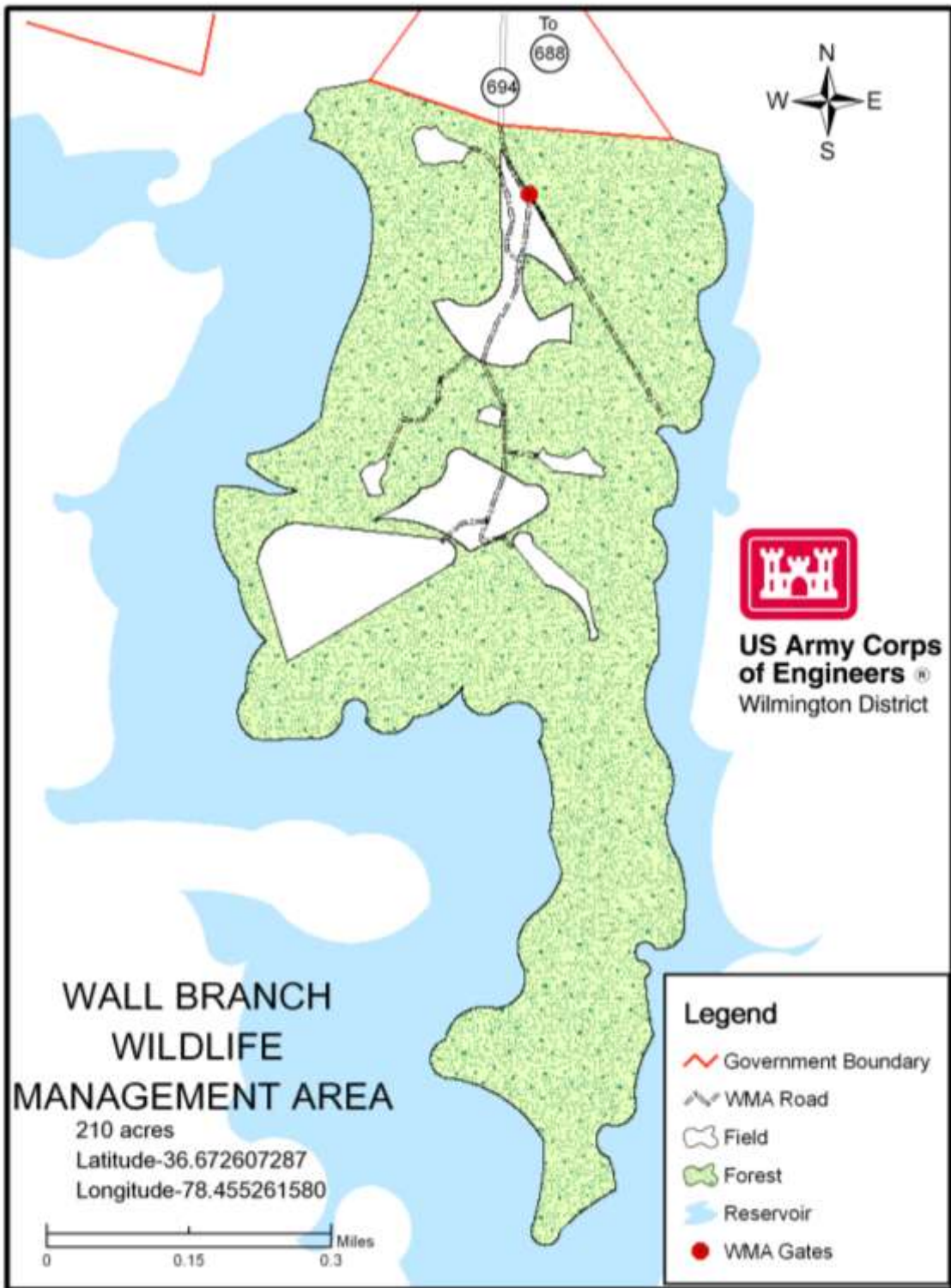


**US Army Corps
of Engineers**
Wilmington District

Legend

- Government Boundary
- WMA Road
- Field
- Forest
- Reservoir
- WMA Gates





CONTACT INFORMATION

US Army Corps of Engineers
John H. Kerr Dam and Reservoir
1930 Mays Chapel Road
Boydton, VA 23917
(434)738-6143

<http://www.saw.usace.army.mil/jhkerr/index.htm>

Please report any violations of fish and game laws to the following offices:

Virginia Department of Game and Inland Fisheries: 1-800-237-5712
North Carolina Wildlife Resource Commission: 1-800-662-7137

FOR ALL EMERGENCIES DIAL.....911

US Army Corps of Engineers Visitor Assistance Center Hours
MONDAY- FRIDAY 8:00AM-4:30PM



**US Army Corps
of Engineers ®**
Wilmington District

The information contained in this guide is subject to change without notice.

Cover drawn by John H. Nemeč Jr.

2008

C.C.P.